



ELECTRIC TOOTHBRUSH REBATE INSTRUCTIONS

CHOOSE ONE OF THE SUBMISSION METHODS BELOW

ON-LINE SUBMISSION

Complete your submission on-line by visiting crestoralbrebate.com and follow the on-line instructions.



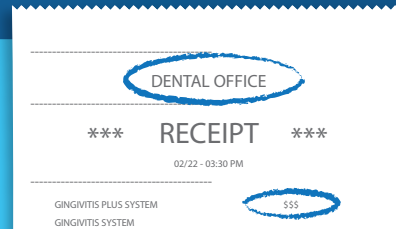
- OR -

MAIL-IN SUBMISSION

1

RECEIPT

Copy of the Dental office receipt (must be purchased at a dental office, not at a retail store). Receipt must be dated and the dental office and purchase price circled.



2

REBATE FORM

Please completely fill-out the rebate form clearly. Proper delivery depends on a complete and correct form.



3

UPC BAR CODE

The UPC Bar Code can be found on the box of the electric toothbrush.



We suggest making a copy of all documents submitted and keeping them until you receive your pre-paid card.



DELIVERY

Please allow 6 to 8 weeks for delivery of the pre-paid card. For status of your pre-paid card, call 1-833-466-6330.



Please note: The pre-paid card will come in an envelope that looks like this. No indication of "Crest®/Oral-B®" on return address. DO NOT throw away this envelope containing your pre-paid card.

