



# ELECTRIC TOOTHBRUSH REBATE INSTRUCTIONS

CHOOSE ONE OF THE SUBMISSION METHODS BELOW

## ON-LINE SUBMISSION

Complete your submission on-line by visiting [crestoralbrebate.com](http://crestoralbrebate.com) and follow the on-line instructions.



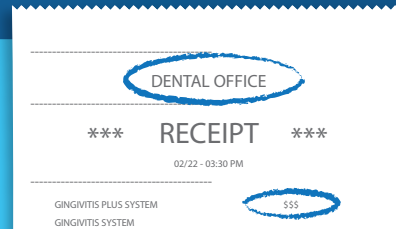
- OR -

## MAIL-IN SUBMISSION

# 1

### RECEIPT

Copy of the Dental office receipt (must be purchased at a dental office, not at a retail store). Receipt must be dated and the dental office and purchase price circled.



# 2

### REBATE FORM

Please completely fill-out the rebate form clearly. Proper delivery depends on a complete and correct form.



# 3

### UPC BAR CODE

The UPC Bar Code can be found on the box of the electric toothbrush.



We suggest making a copy of all documents submitted and keeping them until you receive your pre-paid card.



### DELIVERY

Please allow 6 to 8 weeks for delivery of the pre-paid card. For status of your pre-paid card, call 1-833-466-6330.



Please note: The pre-paid card will come in an envelope that looks like this. No indication of "Crest®/Oral-B®" on return address. DO NOT throw away this envelope containing your pre-paid card.

